

FRIENDS OF LAPHAM PEAK

LAPHAM LODGE

DONATION/GIFT CATALOG

Show your support for the Friends and the Lodge by donating towards specific items needed to make it a complete building for all to enjoy. There are opportunities to donate actual items, or to provide a monetary donation to pay for needed items.

Below is a Master List of the remaining potential donor items for you to consider. Following that are detailed descriptions of each item that show what the item includes and how it can be donated. At the end is a form you can use to submit your item choice and donation.

LAPHAM LODGE -- POTENTIAL DONOR ITEMS					
ITEM NO.	DESCRIPTION	ESTIMATED MONETARY VALUE	ITEM CAN BE DONATED	MONETARY VALUE CAN BE DONATED	NOTES
1a	8" by 4" Engraved Paver for Path to Grill	\$200	NO	YES	See Paver Order Form
1b	8" by 8" Engraved Paver for Path to Grill	\$500	NO	YES	See Paver Order Form
3	Lockable lockers - 30 total	\$9,000	NO	YES	
6	15 Round Folding Tables in Gathering Area	\$3,000	NO	YES	Partial Donation Received
7	148 Stackable Chairs, with Carts	\$12,350	NO	YES	Partial Donation Received
12	Outdoor Drinking Fountain	\$6,000	YES	YES	Partial Donation Received
13	Site landscaping materials and installation	\$3,500	YES	YES	Partial Donation Received
14	Microwave Ovens (2)	\$200	NO	YES	Partial Donation Received
16a	Automatic Coffee Brewer water supply	\$1,000	NO	YES	
17	Two rolling carts (Each)	\$200	YES	YES	
18	Room divider for the Gathering Area	\$1,700	YES	YES	
19	Donor Recognition Wall	\$2,000	NO	YES	Partial Donations Received
20	Solar Panels on Roof	\$29,000	NO	YES	Partial Donations Received
21	Special Snowblower for patio	\$1,000	YES	YES	
22	Carpet Extractor (Cleaner)	\$6,300	YES	YES	
25a	A/V - Infrastructure and Pre-wire	\$14,500	NO	YES	
25c	A/V - Gathering Area	\$28,000	NO	YES	
25e	East Patio Public Address System	\$4,200	NO	YES	
26	Grill and concrete pad	\$400	NO	YES	Partial Donation Received
28	Shades for Multi-Purpose Room Windows	\$2,700	NO	YES	
30	Bulletin Board	\$2,500	NO	YES	

Advanced approval is required for the donation of actual items. Some items will be provided under the construction contract – these items can only be supported by a monetary donation. Monetary donations can be for all or part of the estimated value of the listed item. Additional items not shown on the list will be considered, and will require prior approval by the Friends.

Donors of these items will be recognized on a special display in the Lodge gathering area. Monetary donations for specific items must be at least \$2000 to be included on the donor recognition display. The value of monetary donations for specific items cannot be also applied to donor pavers.

Please see the following detailed descriptions of items for donation for more information about the scope, quantities, and estimated costs of items that can be donated.





Friends of Lapham Peak

LAPHAM LODGE

THE EAST PATIO PAVERS ARE SOLD OUT, BUT PAVERS CAN BE PURCHASED FOR THE PATH TO THE GRILL PAD

SHOW YOUR SUPPORT FOR THE NEW LAPHAM LODGE

DONORS WILL BE RECOGNIZED WITH LASER-PRINTED PAVERS IN THE PATH FROM THE PATIO TO THE GRILL

The Lapham Lodge will be an exciting addition to Lapham Peak, providing a spacious gathering area, expanded restrooms, and other amenities for visitors to the park year-round. The Lodge will be located at the Evergreen Trailhead and will have a large east-facing patio and a grill on a pad north of patio, connected by a brick path. Pavers for the patio are sold out, but you can still get a laser printed paver for the path.

Donate today to get a laser printed paver with your name on it when the building opens to the public in 2025!

=====
 More information on back side of this flyer!
 =====

Order Form

Brick Choice (Check Box)	Character Limit	Minimum Donation
<input type="checkbox"/> 4x8 Brick	2 lines of 18	\$200
<input type="checkbox"/> 8x8 Brick	4 lines of 18	\$500
My Donation Amount		\$ _____

Please, only one brick per order form

Name _____

Street Address _____

City _____ State ____ Zip _____

Phone _____

Email _____

Print Characters in Boxes

Payment Types: Cash, Check, Money Order,
or Credit Card (via FLP Website)

- Order online: thatsmybrick.com/flp
- Checks made out to: **Friends of Lapham Peak/Lapham Lodge**
- Mail or return form to: **Friends of Lapham Peak**
W329 N846 County Hwy "C"
Delafield, WI. 53018

Ordering Process

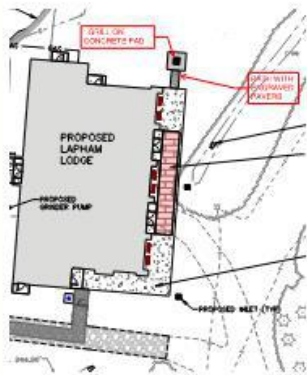
For your convenience, on the front side of this flyer is an order form to fill out, with payment, and mail or drop off to:

**Friends of Lapham Peak
W329 N846 County Hwy "C"
Delafield, WI. 53018**

Payment Options:
Cash, Check, Money Order, or
Credit Card (via FLP Website)

Checks made out to:
Friends of Lapham Peak/Lapham Lodge

To order online please visit:
thatsmybrick.com/flp

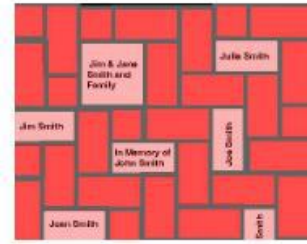


QR Code to FLP Website for More Information

Contact Information

Questions? Contact:

**John McCarthy
(414) 412-0331
laphamlodge@laphampeakfriends.org**



Brick Options

Donors are encouraged to keep it simple -- a name or two, "Family of..." "In Memory of..." or other short message

4 x 8 Brick

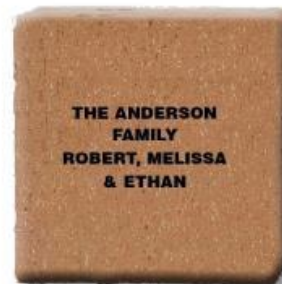
- 2 lines of 18 character personalization
Includes spaces and punctuation



4x8 Sample Brick

8 x 8 Brick

- 4 lines of 18 character personalization
Includes spaces and punctuation



8x8 Sample Brick

Bricks Provided by:



3. Lockers by the Changing Rooms. This item is for ten sets of three lockers each that are located across from the Changing Rooms. The lockers are lockable, by a digital system, and free to use. Each locker is 12 inches wide by 24 inches tall and 15 inches deep. The total estimated cost for all 30 lockers is \$9000. This item was installed as part of the construction contract.

Home / Triple Tier Electronic Locker

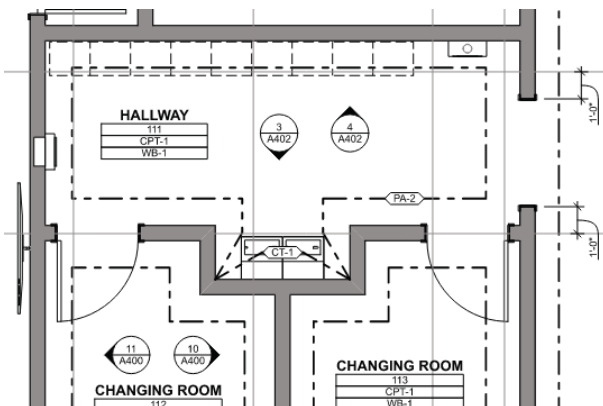
Description

Our triple tier metal electronic locker has been engineered for optimal performance and to withstand many years of continual use and they accommodate three times as many users in the same amount of floor space as single tier lockers. Featuring keyless Diglock digital keypad locks, triple tier digital lockers include double hooks for easy organization. The locker bottom is great for secure storage of books, bags, hats and other articles. Use this locker in your school, gym, spa, office, employee locker room, mailroom, home, or any other facility where secure personal storage is desired. Industrial grade quality lockers built to last with a modern, stylish appearance!

*Note: ** A programming key unique to each locker system is required to program electronic locks and must be purchased separately. Management of the locker system including override and external power features are controlled with manager keys that are also available for separate purchase.***

Key Features

- ④ **Locks:** Diglock Range Digital Locker Locks
- ④ **Doors:** Durable 16-gauge metal doors and 16-gauge reinforced welded channel frames for superior rigidity and durability
- ④ **Latching:** Secure two-point latching to prevent prying and keep valuables secure and safe
- ④ **Handles:** Stainless steel recessed handles for aesthetic appeal. Catch free handles eliminate protrusions from the face of the locker door
- ④ **Powder Coated:** Premium paint process that provides a durable, attractive and scratch resistant finish
- ④ **Hinges:** Continuous piano hinges or two heavy duty, double spun, full loop, tight pin five knuckle hinges
- ④ **Louvers:** Louvered doors promote ventilation
- ④ **Hooks:** Interior hooks maximize storage efficiency
- ④ **Continuous Door Strikes:** Prevent latch and frame damage
- ④ **Quiet Features:** Include unique nylon glides and rubber bumpers to minimize noise and provide smooth operation for years to come
- ④ **Legs:** 6" high legs are standard. Units without legs are available for a nominal charge
- ④ **Number Plates:** 1 and up are included with each order unless you indicate otherwise
- ④ **Override Capability:** Supervisory override key capability (These keys are sold separately)
- ④ **Advanced Security:** Features a 1/2" dead bolt (shared use) or 1/2" dead latch (assigned use) and operates with a motorized mechanism.
- ④ **Programmable:** Option of temporary or permanent usage
- ④ **Battery:** Operates with 4 AA batteries for 3-5 year battery life with built-in battery indicator



6. Round Folding Tables for the Gathering Space (15) -- These tables have been purchased. A donation towards a portion of cost for these tables has been received. The remaining cost for the tables is \$3000.00

Uline 72 inch Round Table

Need 15

Economy Folding Table - 72" Diameter



[More Images](#)

Set up in seconds for extra room at parties or picnics.

- Blow-molded polyethylene top.
- 29" fixed table height with locking steel legs.
- Folds to 2" thickness for easy storage.

MODEL NO.	DIMENSIONS	SHAPE	CAPACITY (LBS.)	PRICE EACH		IN STOCK SHIPS TODAY	
				1	4+		
H-4844	72" Diam.	Round	250	\$275	\$265	<input type="text" value="1"/>	ADD

SHIPS ASSEMBLED VIA MOTOR FREIGHT

DIMENSIONS:

- Tabletop (Actual Diameter): 71"
- Legs (Diameter): 1 1/2"
- Distance Between Legs:
 - Short Side: 38 13/16"
 - Long Side: 41 7/16"

7. Stackable Chairs in Gathering Space and Multi-Purpose Room (148), and Nine Chair Dollies -- These chairs and dollies have been purchased. The chairs are black. A donation towards a portion of cost for these chairs and dollies has been received. The remaining cost for the chairs and dollies is \$12,350.00



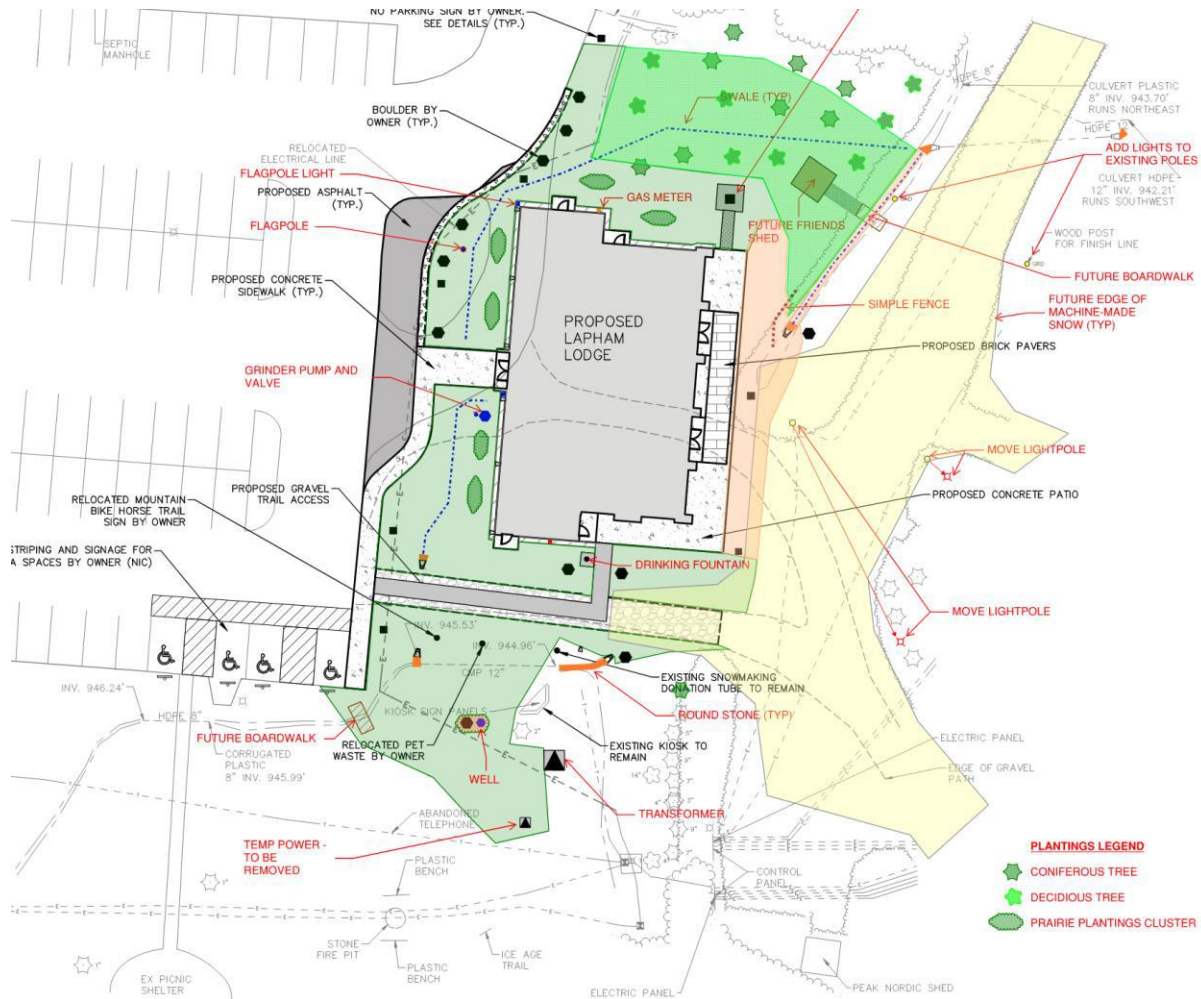
Chair Dolly



12. Outdoor Drinking Fountain -- This item will be located along the south side of the building. It will be an MDF 440 SM or SMSS with optional pet fountain. Color: Blue. Jug Filler. Water Filter, with an attached pet fountain. A partial donation toward this item has been received. The remaining estimated cost to purchase and install the exterior drinking fountain is \$6000. The outdoor fountain can be purchased or donated, including qualified installation.



13. Site Landscape Materials and Installation -- This is a “Wild Card” item that has not yet been fully defined. It is an opportunity to enhance the park environment by providing materials for installation. The landscape design should include native shrubs and trees that compliment the building and the setting. Approval by the DNR will be required. Below is the Preliminary Landscape Plan for the building.



14. Microwave Ovens for the Multi-Purpose Room and the Gather Space (One each)

–These ovens have been purchased and placed on the countertops in the respective rooms. A donation has been received for one of the ovens. A donation of \$200 is needed to pay for the second oven.

COMMERCIAL CHEF 1.1 Cu Ft Microwave with 10 Power Levels, Microwave 1000W with Push Button Door Lock, Countertop Microwave with Microwave Turntable and Digital Controls, Stainless Steel



Size: **1.1 Cubic Feet**

Brand Commercial CHEF
Product 17.1"D x 20.3"W x 12"H
Dimensions

Color Stainless Steel

Capacity 1.1 Cubic Feet

Special Feature Safety Lock, Timer, Turntable

Recommended Vegetable

Wattage 1000

16a. Water Line for Automatic Coffee Maker with Hot Water Faucet – The coffee maker has been purchased, but a water line is needed to provide water to the unit. The estimated cost to install the water line is \$1000.

Bunn® Automatic 3 Burner Coffee Maker



[More Images](#)

Brew up to 8 pots of coffee per hour. Recommended for commercial kitchens and high-traffic breakrooms.

- Plumbing line required.
- All stainless steel construction.
- Built-in hot water faucet for tea and hot cocoa.
- 3 separately controlled warmers keep coffee hot.
- Includes coffee funnel and 50 filters. [Decanters](#) sold separately.
- Additional [Coffee and Supplies](#) available.

1 YEAR WARRANTY

MODEL NO.	DESCRIPTION	DIMENSIONS W x H x D	BREWS	PRICE EACH	IN STOCK SHIPS TODAY	
H-10899	Automatic Coffee Maker	17 x 21 x 9"	12 Cups	\$1,100	<input type="text" value="1"/>	<input type="button" value="ADD"/>

[+ Additional Info](#) [+ Shopping Lists](#) [Request a Catalog](#)

17. Rolling Carts (Two) – This item would be available for use in the Gathering Space or the Multi-purpose Room for events. The estimated cost of the carts is \$110 each. These items can be donated or purchased. The carts will need to match.

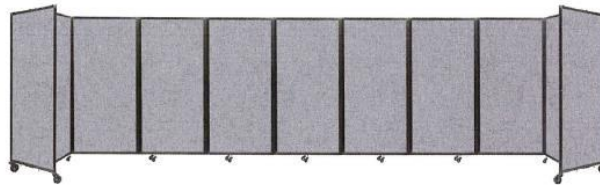


18. Room Divider for Gathering Space – This item will be used by Park staff to provide a soft division of the Gathering Space, It can be purchased or donated, and is estimated to cost about \$1,700.

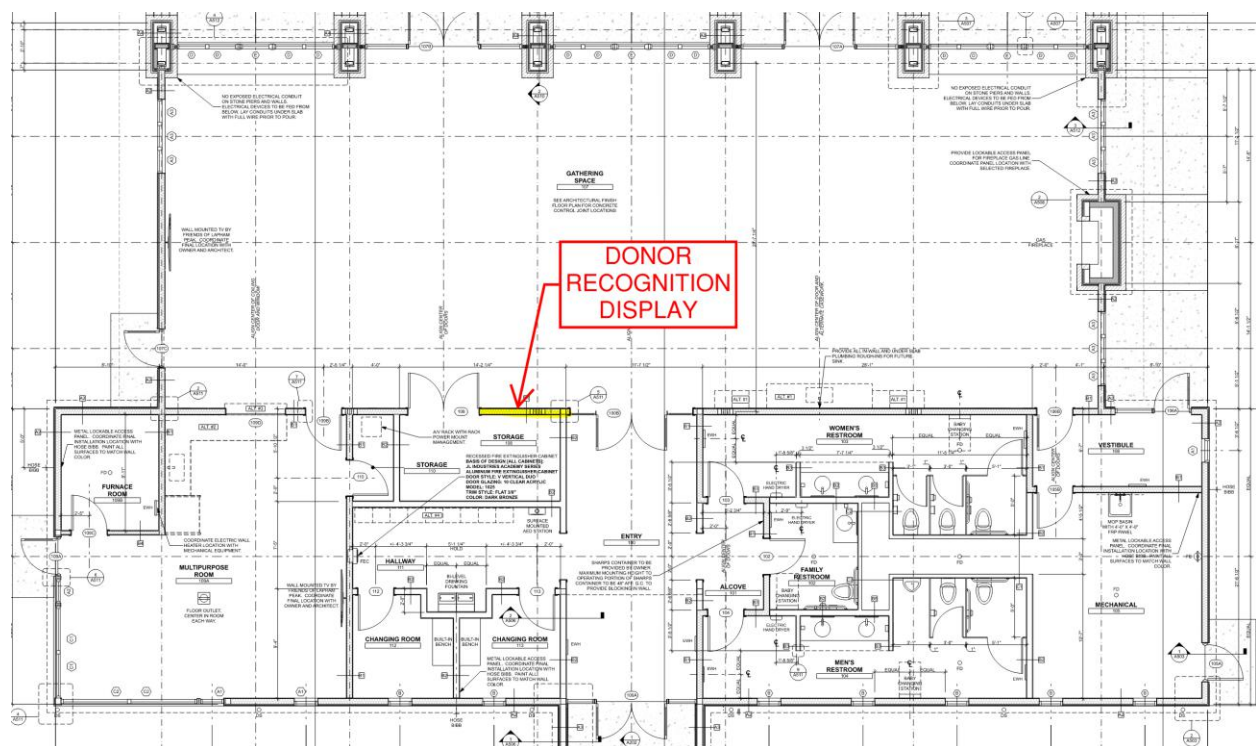
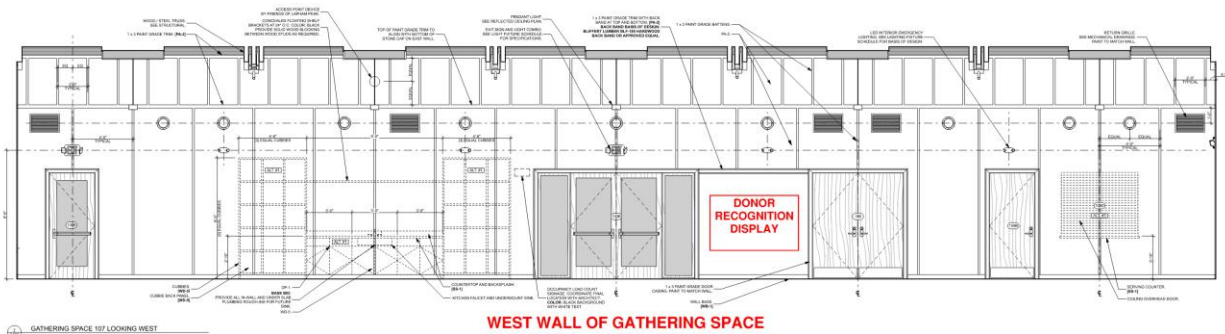


 **The Room Divider 360® Folding Portable Partition**

\$1,657.00



19. Donor Recognition Display – This “One-of-a-kind” item will be a display recognizing the many donors who have made the Lodge possible. It is being created by local sculptor John Hallett, and is being made of bronze, ceramic, and glass. Partial donations have been received for the display. The remaining cost, for donation toward this item, is \$2000.



20. Solar Panels on Roof – This item would include an array of solar panels installed on the Gather Space roof and connected into the building electrical system. It would supply supplemental electric power for lights, electrical appliances and electric heaters, saving utility costs for the Friends for the first five years of building operation, and for the DNR thereafter. The estimated total cost of the system, installed, is \$60,000. Donations of materials and funds have reduced the remaining cost to \$29,000.



21. Special Snowblower for East Patio – This item would be used by the Park Staff to clear snow off the east patio, and has rubber blades to avoid damage to the brick pavers. The estimated cost is \$930. It could either be donated or purchased.

PROFESSIONAL 21 SSR

Model #938024

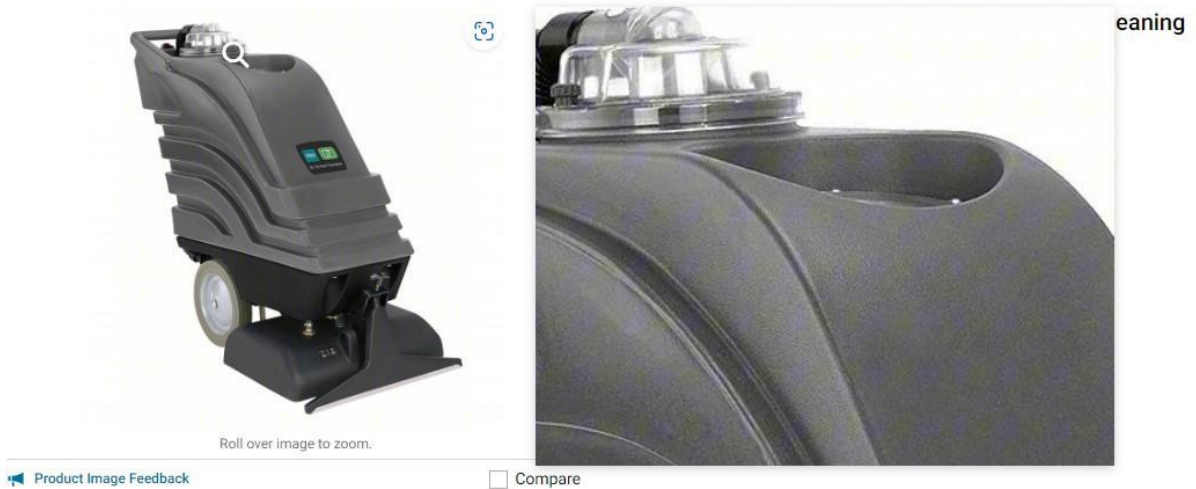
★★★★★ [12 Reviews](#)



• • • •
Actual product may vary

\$929.00

22. Carpet Extractor (Cleaner) for Gathering Space – This item will be used by Park Staff for cleaning the carpeting in the Gathering Space and the Multi-Purpose Room. The estimated cost is \$6300. It could be either purchased or donated.



Product Details

Catalog Page [1521](#)

Brand TENNANT	Material Rotational Molded
Cleaning Path 20 in	Cord Length 50 ft
Power Source 115V	Sound Level 78 dB
Solution Tank Capacity 10 gal	Features Drop-Down Hose for Easy Emptying; Simple Controls for Ease of Use; Solenoid Valve That Helps Prevent Drips
Recovery Tank Capacity 14.5 gal	Standards CRI
Pump Pressure 100 psi	UNSPSC 47121609
Vacuum Motor 3 Stage, 1.8 hp	Country of Origin USA (subject to change)
Brush Speed 1,380 RPM	

Product Description

These walk-behind carpet extractors offer a variety of cleaning path widths, solution tank capacities, and recovery tank capacities to best meet your commercial cleaning needs.

[Product Details Feedback](#)

25. Audio-Video System for the Lodge. This item is divided into five components: **a.** Infrastructure and Pre-Wire; **b.** Multi-Purpose Room; **c.** Gathering Area Projector/Screen, **d.** Gathering Area Display Television, and **e.** East Patio speakers and Public Address System. The costs for items 25b, and 25d have previously been donated. Following are detailed descriptions of items 25a, 25c, and 25e.

25a. Audio-Video Infrastructure and Pre-wire. This item includes installation of wiring in conduit that is being but in as part of the building construction. The estimated cost for the materials and labor is \$14,500. This item is required for all of the subsequent items.

Gathering Area

Pre-wire for (2) CAT6 to projector
Pre-wire for (2) CAT6 to presentation computer area
Pre-wire for (8) 70V indoor pendant speakers
Pre-wire for (1) commercial projector
Pre-wire for (1) Control 4 10" in wall touchscreen
Pre-wire for (1) HDMI 4K wall jack
Pre-wire for (1) indoor volume control
 (1) HDMI 30M FIBER GRADE (MOFO-HD21-30) (HDCP 2.3)
 (1) HDMI 23M (MOFO-HD21-23) (HDCP 2.3)
Pre-wire for (3) CAT6 to Digital Signage Location
 (1) HDMI 30M FIBER GRADE (MOFO-HD21-30) (HDCP 2.3)

Storage Room

Skeleton A/V rack located here

Network

Pre-wire for (1) router
Pre-wire for (2) access points

Multi-Purpose Room

Pre-wire for (2) CAT6 to conference table
Pre-wire for (2) CAT6 to display
Pre-wire for (2) in ceiling speakers
Pre-wire for (1) 65" TV
Pre-wire for (1) Control 4 10" in wall touchscreen
 (3) HDMI 8M FIBER GRADE (MOFO-HD21-8) (HDCP 2.3)
 (2) Vapor barriers
 (2) New construction brackets

North Side of Building

Pre-wire for (4) 70V outdoor surface mount speakers
Pre-wire for (1) outdoor rated volume control
 (1) 70V outdoor rated volume control
Pre-wire for (1) (outdoor mic wall jack to mixer amp)
 (lot) Mic wire (outdoor mic wall jack to mixer amp)
 (lot) 2 conductor 12 gauge speaker wire

Additional Installation Parts (Estimated):

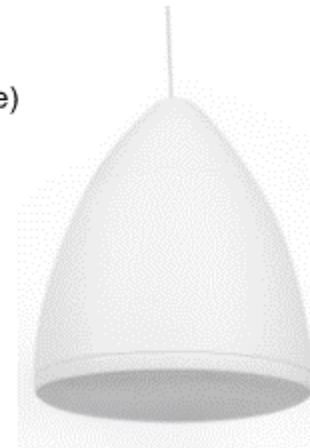
250 ft 2-conductor UL CL-2 Speaker Wire
 700 ft 4-conductor UL CL-2 Speaker Wire
 1,800 ft CAT 6 DATA/Network Wire

Installation Labor and Programming:

25c. Audio-Video for the Gathering Area. This item is for the audio-video components for use in the events in the Gathering Area. The total estimated cost of this item is \$28,000. It includes providing and installing the following components:

Gathering Area

- (8) Episode 800 series 6" pendant speakers (ECS-800-PND6-WHT) (black)
- (1) Sony STRAZ1000ES receiver
- (1) Shure SLXD mic receiver (includes wireless microphone)
- (1) Sony VPL-FHZ80 commercial laser projector
- (1) Strong precision projector mount (SM-PROJ-XL-WH) (white)
- (1) Projector mount post extension (white)
- (1) Da-Lite 106" .9 Tensioned Contour Electrol 38788LSI
- (1) HDMI wall jack
- (1) HDMI 2 meter (HDCP 2.3)
- (1) Control 4 Control4 CORE 3 Controller (C4-CORE3)
- (1) Control 4 10" in wall touchscreen (C4-T4IW10-BL)
- (1) POE injector/in wall touchscreen back box



(Episode Pendant Speaker)

Storage Room

- (1) Sanus CFR1620 skeleton A/V rack
- (1) Rack mount power management

Network

- (1) Araknis 220 series gigabit router (AN-220-RT)
- (2) Araknis 820 series high powered access points (AN-820-AP-I)
- (1) 8 port gigabit switch w/POE+

25e. East Patio Exterior Speakers and Public Address System. This item is for the audio components for the East Patio. It includes four speakers, a microphone jack, a microphone, and programming of the system, which will be interconnected with the interior sound system in the Gathering Area. The total estimated cost of this item is \$4,200. It includes providing and installing the following components:

Exterior Announcement Speakers

- (4) Episode All Weather 8" Commercial speakers (ECS-500-AW70V-8-BLK)
- (1) 70V outdoor rated volume control
- (1) Shure SM58-CN hardwired mic w/25" cable

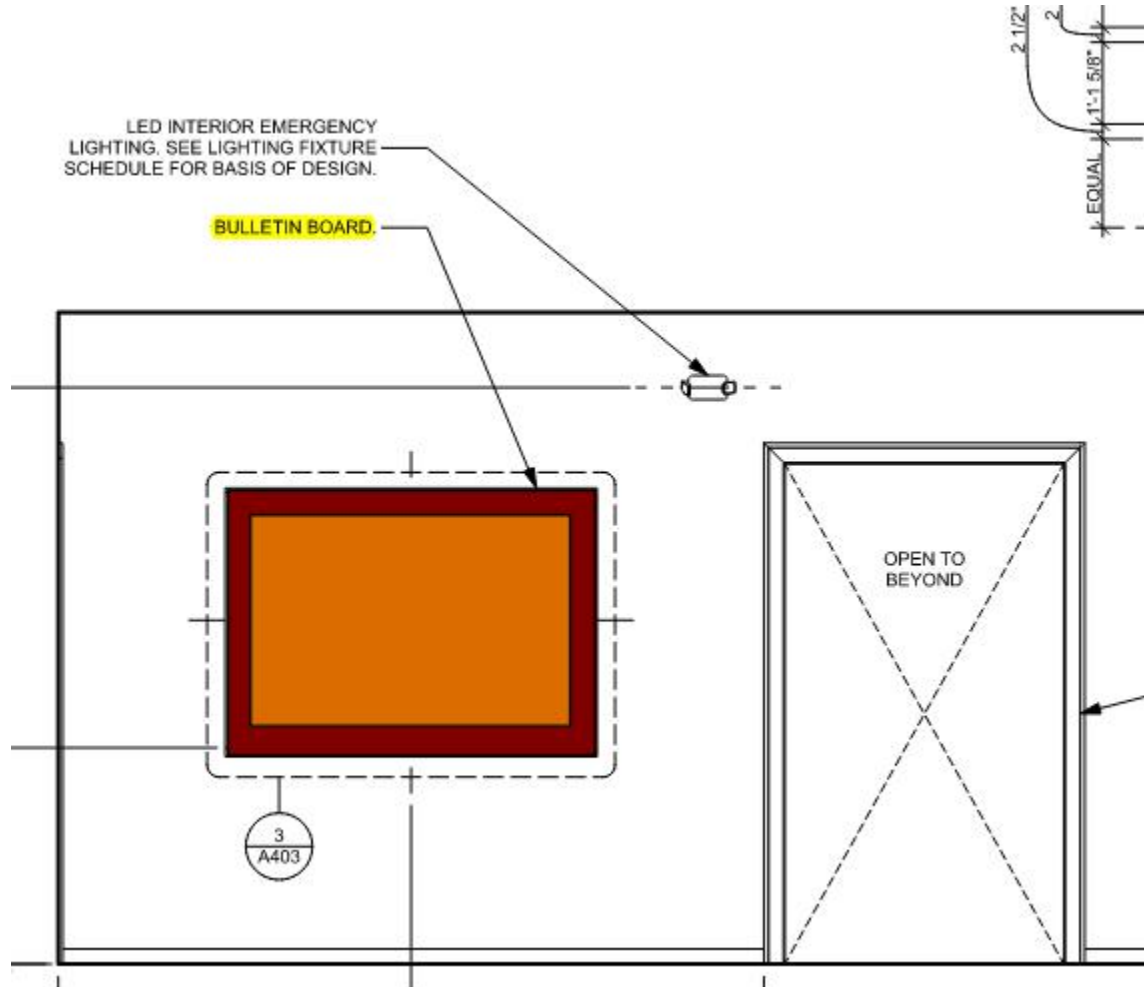
Additional Installation Parts (Estimated):

- (lot) Mic wire (outdoor mic wall jack to mic mixer)
- (lot) 2 conductor 12 gauge speaker wire

28. Shades for Multi-Purpose Room Windows – Seven windows in the Multi-Purpose Room now have shades to block the sun during the afternoon and vehicle lights in the evening. The shades are partially opaque and can be raised or lowered by hand. The shades are SWF R-series Manual Roller Shades, with a cost of \$2,600, including installation.



30. Bulletin Board in Entryway – This item was added to the project to provide a place for posting of information by the Friends, DNR, and others. It is custom-made of wood and cork, and will accept standard push-pins. The cost for this item is \$2500.



COMPLETE THE FOLLOWING FORM AND SUBMIT TO THE FRIENDS OF LAPHAM PEAK

I WOULD LIKE TO DONATE THE FOLLOWING ITEM FOR THE LAPHAM LODGE:

OR – I WOULD LIKE TO MAKE A MONETARY DONATION IN THE AMOUNT OF

_____ FOR THE FOLLOWING ITEM FOR THE LAPHAM LODGE:

NAME: _____

ADDRESS: _____

CITY: _____ STATE _____ ZIP CODE _____

PHONE NUMBER: _____

E-MAIL: _____

METHOD OF PAYMENT FOR MONETARY DONATIONS: _____ CHECK _____ CREDIT CARD

NOTE: Credit Card payments can be made through the Friends of Lapham Paypal Account. Use the following link to access the Friends' Webpage for accessing the catalog or making a Paypal payment:

<https://laphampeakfriends.org/lodge/>

Mail this form and your check to: Friends of Lapham Peak – Lapham Lodge

W329 N846 County Hwy "C"

Delafield, WI 53018

Do you have an item that you want to donate, but it is not on the list? Please use the e-mail below to describe the item. You should then expect a phone call from the Friends to discuss the item with you.

Please contact us with any questions at – laphamlodge@laphampeakfriends.org

Or call Mark Herr - (414) 322-7428, or John McCarthy - (414) 412-0331

The Friends of Lapham Peak are a registered 501(c)3 non-profit organization. Consult your tax adviser regarding the tax deductibility of your donation.

THANK YOU FOR YOUR SUPPORT OF THE LAPHAM LODGE - A PLACE TO CONNECT PEOPLE WITH NATURE AND EACH OTHER.