

**FRIENDS OF LAPHAM PEAK**

# **LAPHAM LODGE**

## **DONATION/GIFT CATALOG**

Show your support for the Friends and the Lodge by donating towards specific items needed to make it a complete building for all to enjoy. There are opportunities to donate actual items, or to provide a monetary donation to pay for needed items.

Below is a Master List of the remaining potential donor items for you to consider. Following that are detailed descriptions of each item that show what the item includes and how it can be donated. At the end is a form you can use to submit your item choice and donation.

<b>LAPHAM LODGE -- POTENTIAL DONOR ITEMS</b>					
ITEM NO.	DESCRIPTION	ESTIMATED MONETARY VALUE	ITEM CAN BE DONATED	MONETARY VALUE CAN BE DONATED	NOTES
1a	8" by 4" Engraved Paver for Path to Grill	\$200	NO	YES	See Paver Order Form
1b	8" by 8" Engraved Paver for Path to Grill	\$500	NO	YES	See Paver Order Form
3	Lockable lockers - 30 total	\$9,000	NO	YES	
19	Donor Recognition Wall	\$2,000	NO	YES	Partial Donations Received
20	Solar Panels on Roof	\$29,000	NO	YES	Partial Donations Received
21	Special Snowblower for patio	\$350	YES	YES	Partial Donations Received
22	Carpet Extractor (Cleaner)	\$6,300	NO	YES	
25a	A/V - Infrastructure and Pre-wire	\$14,500	NO	YES	
25c	A/V - Gathering Area	\$28,000	NO	YES	
25e	East Patio Public Address System	\$4,200	NO	YES	
31	Acoustical Panels in the Gathering Space	\$9,400	NO	YES	

Advanced approval is required for the donation of actual items. Some items will be provided under the construction contract – these items can only be supported by a monetary donation. Monetary donations can be for all or part of the estimated value of the listed item. Additional items not shown on the list will be considered, and will require prior approval by the Friends.

Donors of these items will be recognized on a special display in the Lodge gathering area. Monetary donations for specific items must be at least \$2000 to be included on the donor recognition display. The value of monetary donations for specific items cannot be also applied to donor pavers.

Please see the following detailed descriptions of items for donation for more information about the scope, quantities, and estimated costs of items that can be donated.





## Ordering Process

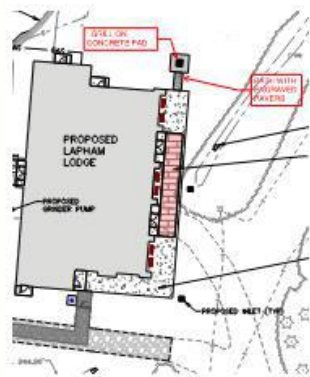
For your convenience, on the front side of this flyer is an order form to fill out, with payment, and mail or drop off to:

**Friends of Lapham Peak  
W329 N846 County Hwy "C"  
Delafield, WI. 53018**

Payment Options:  
Cash, Check, Money Order, or  
Credit Card (via FLP Website)

Checks made out to:  
**Friends of Lapham Peak/Lapham Lodge**

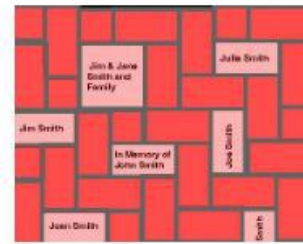
To order online please visit:  
[thatsmybrick.com/flp](http://thatsmybrick.com/flp)



QR Code to FLP Website for More Information

## Contact Information

Questions? Contact:  
**John McCarthy**  
**(414) 412-0331**  
[laphamlodge@laphampeakfriends.org](mailto:laphamlodge@laphampeakfriends.org)



## Brick Options

Donors are encouraged to keep it simple -- a name or two, "Family of..." "In Memory of..." or other short message

### 4 x 8 Brick

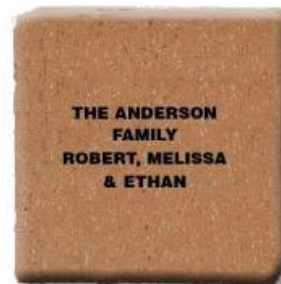
- 2 lines of 18 character personalization  
*Includes spaces and punctuation*



4x8 Sample Brick

### 8 x 8 Brick

- 4 lines of 18 character personalization  
*Includes spaces and punctuation*



8x8 Sample Brick

Bricks Provided by:



**3. Lockers by the Changing Rooms.** This item is for ten sets of three lockers each that are located across from the Changing Rooms. The lockers are lockable, by a digital system, and free to use. Each locker is 12 inches wide by 24 inches tall and 15 inches deep. The total estimated cost for all 30 lockers is \$9000. This item was installed as part of the construction contract.

Home / Triple Tier Electronic Locker

Triple Tier Electronic Locker (3) Each 12" Wide X 15" Deep X 24" High

SKU: 63121572QS1D1

Line Item | Tweet | Share

Add to Wishlist | Compare | **\$413.95**

Quick ship in gray, beige, black, blue and red. Ship within 1 to 3 business days unassembled or within 3 to 5 business days assembled.

Unlimited colors available! Call 1-877-749-1870

Color: Select Color \* Requires finish

\* Assembled or Unassembled: Choose an Option...

\* Legs or No Legs:  Legs  No Legs **-\$1.50**

**\$413.95** Qty: 1 **Add to Cart**

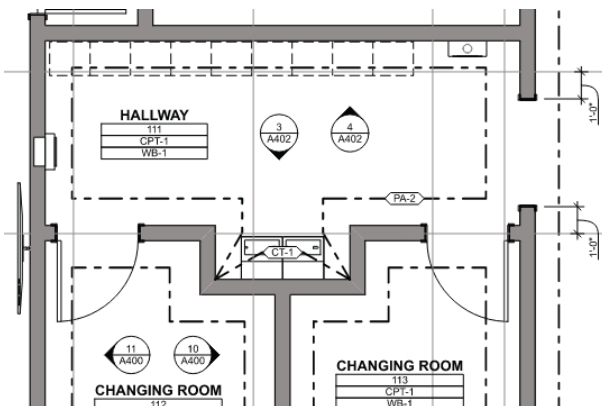
**Description**

Our triple tier metal electronic locker has been engineered for optimal performance and to withstand many years of continual use and they accommodate three times as many users in the same amount of floor space as single tier lockers. Featuring keyless Digilock digital keypad locks, triple tier digital lockers include double hooks for easy organization. The locker bottom is great for secure storage of books, bags, hats and other articles. Use this locker in your school, gym, spa, office, employee locker room, mailroom, home, or any other facility where secure personal storage is desired. Industrial grade quality lockers built to last with a modern, stylish appearance!

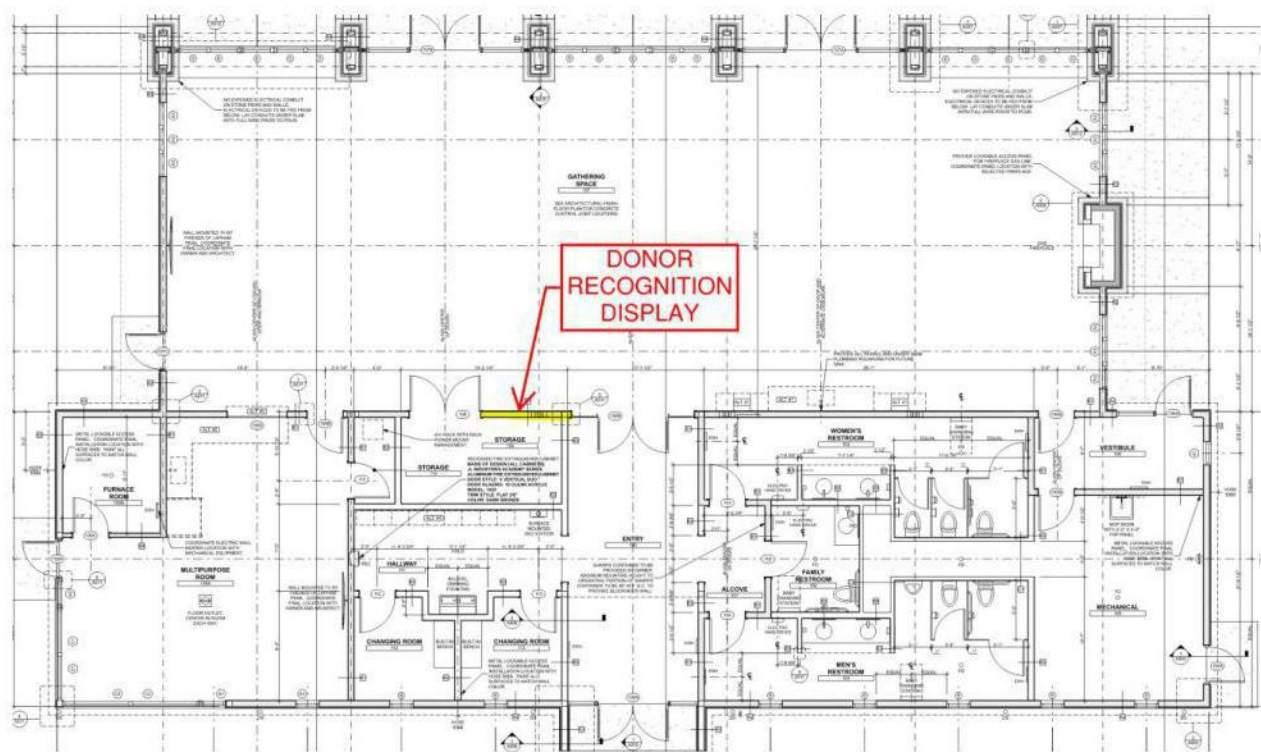
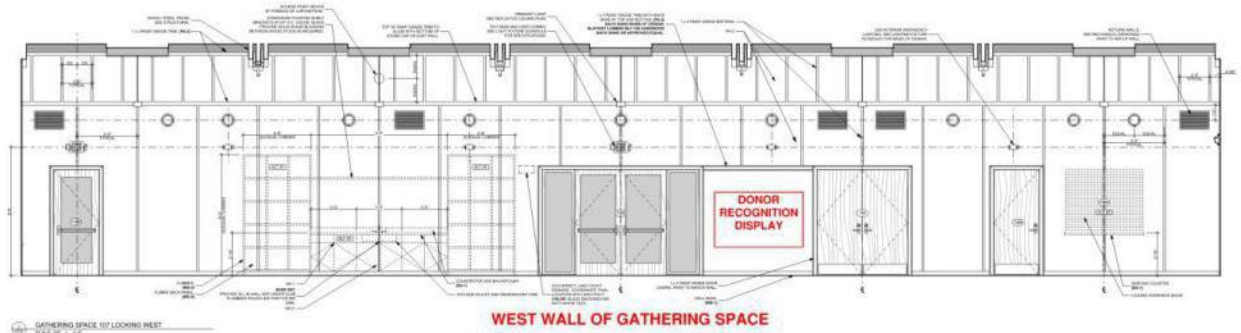
**Note: \*\* A programming key unique to each locker system is required to program electronic locks and must be purchased separately. Management of the locker system including override and external power features are controlled with manager keys that are also available for separate purchase.\*\***

**Key Features**

- ④ **Locks:** Digilock Range Digital Locker Locks
- ④ **Doors:** Durable 16-gauge metal doors and 16-gauge reinforced welded channel frames for superior rigidity and durability.
- ④ **Latching:** Secure two-point latching to prevent prying and keep valuables secure and safe
- ④ **Handles:** Stainless steel recessed handles for aesthetic appeal. Catch free handles eliminate protrusions from the face of the locker door
- ④ **Powder Coated:** Premium paint process that provides a durable, attractive and scratch resistant finish
- ④ **Hinges:** Continuous piano hinges or two heavy duty, double spun, full loop, tight pin five knuckle hinges
- ④ **Louvers:** Louvered doors promote ventilation
- ④ **Hooks:** Interior hooks maximize storage efficiency
- ④ **Continuous Door Strikes:** Prevent latch and frame damage
- ④ **Quiet Features:** Include unique nylon glides and rubber bumpers to minimize noise and provide smooth operation for years to come
- ④ **Legs:** 6" high legs are standard. Units without legs are available for a nominal charge
- ④ **Number Plates:** 1 and up are included with each order unless you indicate otherwise
- ④ **Override Capability:** Supervisory override key capability (These keys are sold separately)
- ④ **Advanced Security:** Features a 1/2" dead bolt (shared use) or 1/2" dead latch (assigned use) and operates with a motorized mechanism.
- ④ **Programmable:** Option of temporary or permanent usage
- ④ **Battery:** Operates with 4 AA batteries for 3-5 year battery life with built-in battery indicator



**19. Donor Recognition Display** – This “One-of-a-kind” item will be a display recognizing the many donors who have made the Lodge possible. It is being created by local sculptor John Hallett, and is being made of bronze, ceramic, and glass. Partial donations have been received for the display. The remaining cost, for donation toward this item, is \$2000.



**20. Solar Panels on Roof** – This item would include an array of solar panels installed on the Gather Space roof and connected into the building electrical system. It would supply supplemental electric power for lights, electrical appliances and electric heaters, saving utility costs for the Friends for the first five years of building operation, and for the DNR thereafter. The estimated total cost of the system, installed, is \$60,000. Donations of materials and funds have reduced the remaining cost to \$29,000.



**21. Special Snowblower for East Patio** – This item would be used by the Park Staff to clear snow off the east patio, and has rubber blades to avoid damage to the brick pavers. The cost was \$700, and we still need \$350 to completely fund this.



**22. Carpet Extractor (Cleaner) for Gathering Space** – This item will be used by Park Staff for cleaning the carpeting in the Gathering Space and the Multi-Purpose Room. The estimated cost is \$6300. This item may only be donated.



**Product Details**

Catalog Page 1521

Brand **TENNANT**

Material **Rotational Molded**

Cleaning Path **20 in**

Cord Length **50 ft**

Power Source **115V**

Sound Level **78 dB**

Solution Tank Capacity **10 gal**

Features  
**Drop-Down Hose for Easy Emptying; Simple Controls for Ease of Use; Solenoid Valve That Helps Prevent Drips**

Recovery Tank Capacity **14.5 gal**

Pump Pressure **100 psi**

Standards **CRI**

Vacuum Motor **3 Stage, 1.8 hp**

UNSPSC **47121609**

Brush Speed **1,380 RPM**

Country of Origin **USA (subject to change)**

**25. Audio-Video System for the Lodge.** This item is divided into five components: **a.** Infrastructure and Pre-Wire; **b.** Multi-Purpose Room; **c.** Gathering Area Projector/Screen, **d.** Gathering Area Display Television, and **e.** East Patio speakers and Public Address System. The costs for items 25b, and 25d have previously been donated. Following are detailed descriptions of items 25a, 25c, and 25e.

**25a. Audio-Video Infrastructure and Pre-wire.** This item includes installation of wiring in conduit that is being but in as part of the building construction. The estimated cost for the materials and labor is \$14,500. This item is required for all of the subsequent items.

**Gathering Area**

*Pre-wire for (2) CAT6 to projector*  
*Pre-wire for (2) CAT6 to presentation computer area*  
*Pre-wire for (8) 70V indoor pendant speakers*  
*Pre-wire for (1) commercial projector*  
*Pre-wire for (1) Control 4 10" in wall touchscreen*  
*Pre-wire for (1) HDMI 4K wall jack*  
*Pre-wire for (1) indoor volume control*  
 (1) HDMI 30M FIBER GRADE (MOFO-HD21-30) (HDCP 2.3)  
 (1) HDMI 23M (MOFO-HD21-23) (HDCP 2.3)  
*Pre-wire for (3) CAT6 to Digital Signage Location*  
 (1) HDMI 30M FIBER GRADE (MOFO-HD21-30) (HDCP 2.3)

**Storage Room**

*Skeleton A/V rack located here*

**Network**

*Pre-wire for (1) router*  
*Pre-wire for (2) access points*

**Multi-Purpose Room**

*Pre-wire for (2) CAT6 to conference table*  
*Pre-wire for (2) CAT6 to display*  
*Pre-wire for (2) in ceiling speakers*  
*Pre-wire for (1) 65" TV*  
*Pre-wire for (1) Control 4 10" in wall touchscreen*  
 (3) HDMI 8M FIBER GRADE (MOFO-HD21-8) (HDCP 2.3)  
 (2) Vapor barriers  
 (2) New construction brackets

**North Side of Building**

*Pre-wire for (4) 70V outdoor surface mount speakers*  
*Pre-wire for (1) outdoor rated volume control*  
 (1) 70V outdoor rated volume control  
*Pre-wire for (1) (outdoor mic wall jack to mixer amp)*  
 (lot) Mic wire (outdoor mic wall jack to mixer amp)  
 (lot) 2 conductor 12 gauge speaker wire

**Additional Installation Parts (Estimated):**

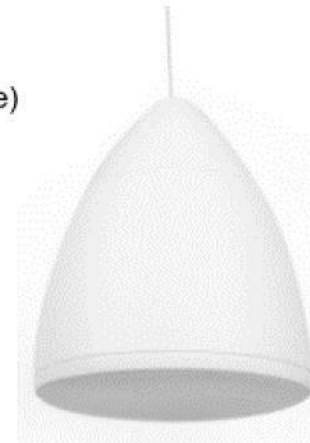
250 ft 2-conductor UL CL-2 Speaker Wire  
 700 ft 4-conductor UL CL-2 Speaker Wire  
 1,800 ft CAT 6 DATA/Network Wire

**Installation Labor and Programming:**

**25c. Audio-Video for the Gathering Area.** This item is for the audio-video components for use in the events in the Gathering Area. The total estimated cost of this item is \$28,000. It includes providing and installing the following components:

#### **Gathering Area**

- (8) Episode 800 series 6" pendant speakers (ECS-800-PND6-WHT) (black)
- (1) Sony STRAZ1000ES receiver
- (1) Shure SLXD mic receiver (includes wireless microphone)
- (1) Sony VPL-FHZ80 commercial laser projector
- (1) Strong precision projector mount (SM-PROJ-XL-WH) (white)
- (1) Projector mount post extension (white)
- (1) Da-Lite 106" .9 Tensioned Contour Electrol 38788LSI
- (1) HDMI wall jack
- (1) HDMI 2 meter (HDCP 2.3)
- (1) Control 4 Control4 CORE 3 Controller (C4-CORE3)
- (1) Control 4 10" in wall touchscreen (C4-T4IW10-BL)
- (1) POE injector/in wall touchscreen back box



(Episode Pendant Speaker)

#### **Storage Room**

- (1) Sanus CFR1620 skeleton A/V rack
- (1) Rack mount power management

#### **Network**

- (1) Araknis 220 series gigabit router (AN-220-RT)
- (2) Araknis 820 series high powered access points (AN-820-AP-I)
- (1) 8 port gigabit switch w/POE+

**25e. East Patio Exterior Speakers and Public Address System.** This item is for the audio components for the East Patio. It includes four speakers, a microphone jack, a microphone, and programming of the system, which will be interconnected with the interior sound system in the Gathering Area. The total estimated cost of this item is \$4,200. It includes providing and installing the following components:

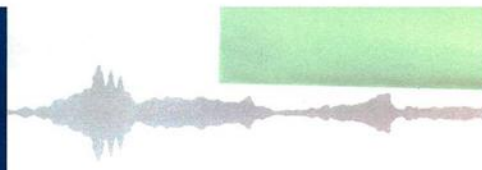
#### **Exterior Announcement Speakers**

- (4) Episode All Weather 8" Commercial speakers (ECS-500-AW70V-8-BLK)
- (1) 70V outdoor rated volume control
- (1) Shure SM58-CN hardwired mic w/25" cable

#### **Additional Installation Parts (Estimated):**

- (lot) Mic wire (outdoor mic wall jack to mic mixer)
- (lot) 2 conductor 12 gauge speaker wire

### 31. Acoustical Panels in the Gathering Space at a cost of \$9,400



#### CORE

Prime Series panels use Owens Corning 707 fiberglass as the sound absorbing substrate — a 6-7 pcf (pounds per cubic foot) density board with superior surface smoothness, sharp edge detail and dimensional stability.

#### SIZES

Available thicknesses: .75", 1", 1.5", 2", 3" and 4". Standard and custom sizes and shapes up to 48" x 120".

#### EDGE DETAIL

All edges are resin hardened, unless otherwise requested. Edges can be square or beveled. Beveling options are many, including full reverse mitering for corners.

#### FINISHES

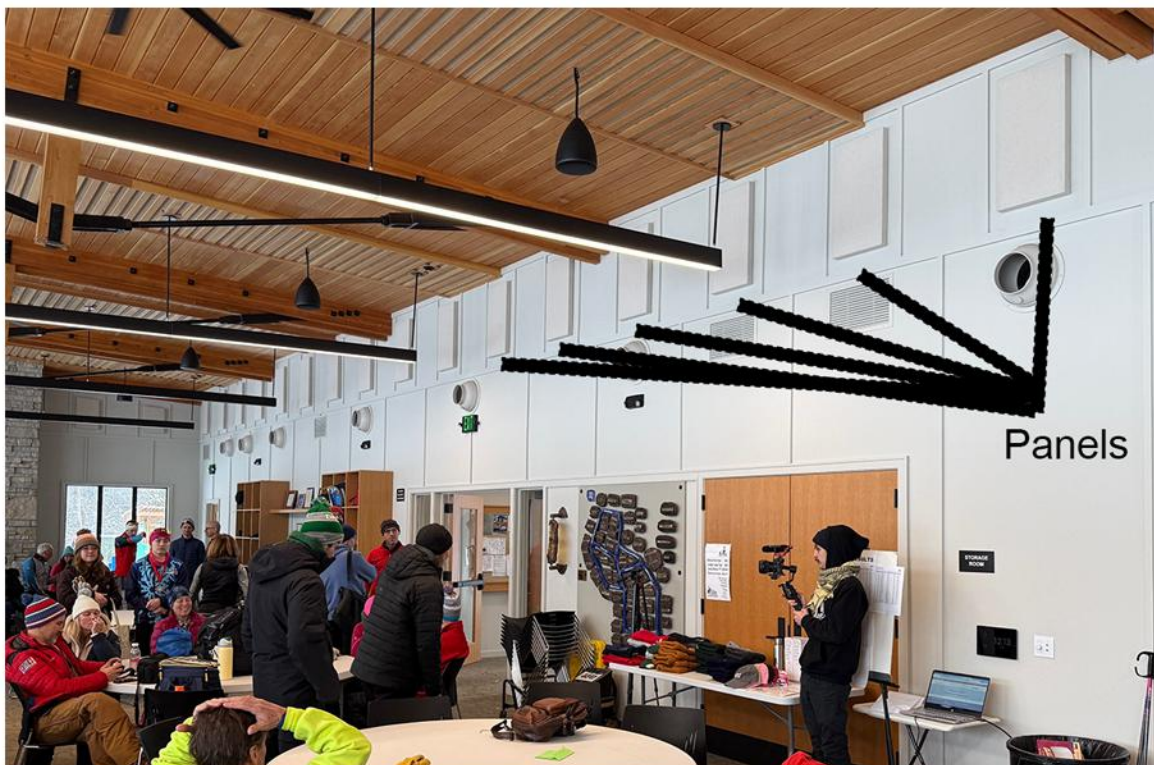
Fabrics from all major brands are available, most commonly used is the Guilford of Maine.

#### RECYCLED CONTENT

Prime Series panels use the Owens Corning 707 fiberglass board core that is eligible to bear the Green Cross label for recycled content. 707 is certified on average to contain at least 35% recycled glass, with 9% post-consumer and 26% pre-consumer content.

#### FIRE RATING

All components of the Prime Series panels conform to ASTM E84 and are rated Class I/A.



**COMPLETE THE FOLLOWING FORM AND SUBMIT TO THE FRIENDS OF LAPHAM PEAK**

I WOULD LIKE TO DONATE THE FOLLOWING ITEM FOR THE LAPHAM LODGE:

\_\_\_\_\_

OR – I WOULD LIKE TO MAKE A MONETARY DONATION IN THE AMOUNT OF

\_\_\_\_\_ FOR THE FOLLOWING ITEM FOR THE LAPHAM LODGE:

\_\_\_\_\_

NAME: \_\_\_\_\_

ADDRESS: \_\_\_\_\_

CITY: \_\_\_\_\_ STATE \_\_\_\_\_ ZIP CODE \_\_\_\_\_

PHONE NUMBER: \_\_\_\_\_

E-MAIL: \_\_\_\_\_

METHOD OF PAYMENT FOR MONETARY DONATIONS: \_\_\_\_\_ CHECK \_\_\_\_\_ CREDIT CARD

NOTE: Credit Card payments can be made through the Friends of Lapham Paypal Account. Use the following link to access the Friends' Webpage for accessing the catalog or making a Paypal payment:

<https://laphampeakfriends.org/lodge/>

Mail this form and your check to: Friends of Lapham Peak – Lapham Lodge

W329 N846 County Hwy "C"

Delafield, WI 53018

Do you have an item that you want to donate, but it is not on the list? Please use the e-mail below to describe the item. You should then expect a phone call from the Friends to discuss the item with you.

\_\_\_\_\_

Please contact us with any questions at – [laphamlodge@laphampeakfriends.org](mailto:laphamlodge@laphampeakfriends.org)

Or call Mark Herr - (414) 322-7428, or John McCarthy - (414) 412-0331

The Friends of Lapham Peak are a registered 501(c)3 non-profit organization. Consult your tax adviser regarding the tax deductibility of your donation.

**THANK YOU FOR YOUR SUPPORT OF THE LAPHAM LODGE - A PLACE TO CONNECT PEOPLE WITH NATURE AND EACH OTHER.**